

**Figure 2.** Contrast-enhanced CT scan. **A:** Coronal thoracoabdominal CT scan showing dextrocardia (asterisk) and a centrally located liver (arrows). **B:** Axial chest CT demonstrating enlargement of the right-sided pulmonary trunk, which measured 5.8 cm in its largest diameter (1), right-sided aorta (2) and left-sided superior vena cava (3). **C:** Axial abdominal CT showing abnormal intestinal rotation (arrowheads)—the entire small bowel is positioned to the left of the midline.

the presence of multiple accessory spleens and duplication of left-sided structures illustrate the polysplenia syndrome. Classical findings in HS include cardiac malpositioning, septal defects, bilateral bilobed or trilobed lungs, midline liver, intestinal malrotation, and abnormal spleen development. Intestinal malrotation can lead to gut volvulus and ischemia<sup>(5,6)</sup>, whereas complete asplenia predisposes to bacterial infections and sepsis<sup>(1,2)</sup>. Up to 75% of patients with polysplenia have significant cardiac malformations, namely endocardial cushion defects, double-outlet right ventricle, left heart obstruction, and anomalous venous return<sup>(4)</sup>. The severity of congenital heart disease remains a main determinant of the long-term prognosis of HS patients—even after surgical repair of congenital heart disease, patients are prone to developing arrhythmias, thromboembolism due to right atrium enlargement<sup>(7)</sup>, and progressive systolic dysfunction<sup>(3)</sup>.

In conclusion, HS is a complex syndrome that has remarkable phenotypic variability and is a challenge to manage. Patients with HS are prone to develop potentially life-threatening complications, which should be promptly diagnosed and managed. Therefore, imaging studies are critical in evaluating these patients, because they delineate the spectrum of possible cardiac and extra-cardiac involvement in HS and associated complications.

#### REFERENCES

1. Teele SA, Jacobs JP, Border WL, et al. Heterotaxy syndrome: proceedings from the 10th International PCICS Meeting. *World J Pediatr Congenit Heart Surg.* 2015;6:616–29.
2. Applegate KE, Goske MJ, Pierce G, et al. Situs revisited: imaging of the heterotaxy syndrome. *Radiographics.* 1999;19:837–52.
3. Shiraishi I, Ichikawa H. Human heterotaxy syndrome – from molecular genetics to clinical features, management, and prognosis. *Circ J.* 2012; 76:2066–75.
4. Ghosh S, Yarmish G, Godelman A, et al. Anomalies of viscerotaxial situs. *AJR Am J Roentgenol.* 2009;193:1107–17.
5. Lee SE, Kim HY, Jung SE, et al. Situs anomalies and gastrointestinal abnormalities. *J Pediatr Surg.* 2006;41:1237–42.
6. Gupta AC, Herts B. Heterotaxia with polysplenia. *J Urol.* 2015;194:801–2.
7. Ferdman B, States L, Gaynor JW, et al. Abnormalities of intestinal rotation in patients with congenital heart disease and the heterotaxy syndrome. *Congenit Heart Dis.* 2007;2:12–8.

**Lucas Samuel Perinazzo Pauvels<sup>1</sup>, Felipe Welter Langer<sup>1</sup>, Daiane dos Santos<sup>2</sup>, Carlos Jesus Pereira Haygert<sup>1</sup>**

1. Department of Radiology and Imaging Diagnosis, Universidade Federal de Santa Maria (UFSM), Santa Maria, RS, Brazil. Correspondence: Dr. Felipe Welter Langer. Universidade Federal de Santa Maria – Departamento de Radiologia e Diagnóstico por Imagem. Avenida Roraima, 1000, Camobi. Santa Maria, RS, Brazil, 97105-900. E-mail: felipewlanger@gmail.com.

<http://dx.doi.org/10.1590/0100-3984.2017.0063>

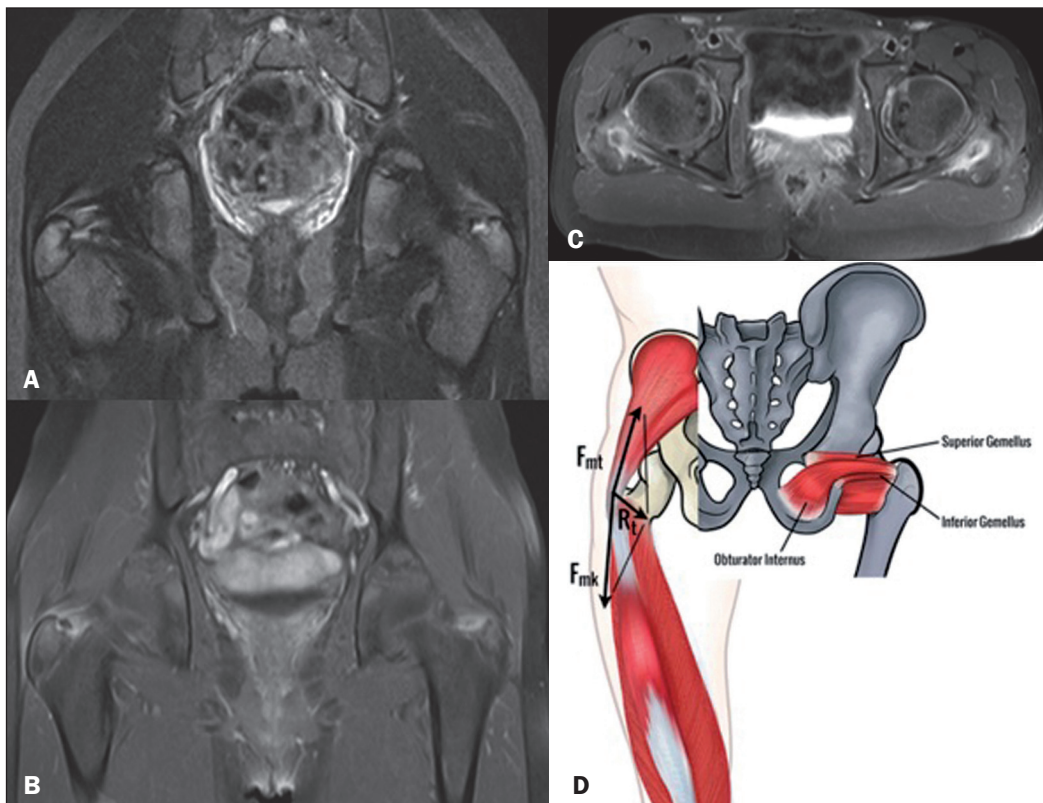


#### Overuse of the hip external rotators: greater trochanter apophysitis in the karate kid

Dear Editor,

A 13-year-old male presented to our institution with an approximately one-month history of pain in both hips that had worsened in the last two weeks, after a soccer match. There was no definitive history of trauma. The patient was a young athlete who practiced soccer and martial arts (karate) regularly. On physical examination, there was tenderness in both hips, with pain that radiated to both thighs and diminished with rest. An X-ray of the pelvis was taken in the emergency department to rule out fractures. The X-ray showed mild irregularity and

sclerosis of both greater trochanters. It was also possible to see small peritrochanteric bone fragments. After a few days, the patient underwent a magnetic resonance imaging scan, which showed insertional tendinopathy and peritendinitis in the obturator internus, gemellus superior, and gemellus inferior muscles (external rotators), bilaterally. There were also irregularities in both greater trochanters, as well as small avulsed cortical fragments with intense bone edema and enhancement (Figure 1A–C). After this initial investigation, clinical and imaging findings suggested bilateral traction apophysitis. Treatment consisted in non-operative management, with good outcome. Clinical follow-up showed good recovery, with complete resolution of the symptoms.



**Figure 1.** Coronal STIR weighted (A) and contrast-enhanced coronal (B) and axial (C) fast spin-echo T1-weighted magnetic resonance imaging scan of the hip showing external rotators insertional tendinopathy, peritendinitis and irregularities in both trochanters, with small avulsed cortical fragments and enhancement. Schematic representation of the obturator internus, gemellus superior, and gemellus inferior muscles inserting into the greater trochanter and the tension band mechanism, the sum of vector forces in the greater trochanter being nearly perpendicular to the apophyseal plate (D).

Apophyses are sites of tendon attachment. In children and adolescents, they are approximately 2–5 times weaker than are the surrounding structures. The greater trochanter apophysis develops by the age of two years and is expected to close at approximately 16 years of age<sup>(1)</sup>.

The apophyses can be injured by acute forces. The chronic mechanism may also occur in a context of repetitive and strong load forces, notably in young athletes, which is known as traction apophysitis/osteochondrosis<sup>(2)</sup>. On X-ray, apophysitis usually manifests as widening of the apophysis and subchondral sclerosis. These findings are diagnostic in an appropriate clinical context<sup>(1)</sup>.

In most cases, apophysitis occurs at typical sites, such as the tibial tubercle (Osgood-Schlatter disease), distal patella (Sinding-Larsen-Johansson disease), and iliac crest (superior or inferior). Because of normal biomechanical forces, apophysitis of the greater trochanter is very rare, only a few cases having been reported, most of them secondary to gluteal muscle traction<sup>(3–8)</sup>.

The double tension band, a mechanism postulated by Heimkes et al.<sup>(6)</sup>, as depicted in Figure 1D, would explain the greater trochanter stability, and thus the rarity of apophysitis at this site. It is based on opposition forces of the gluteus medius and gluteus minimus muscles, as well as those of the counteracting knee extensors (mainly the vastus lateralis muscle). The sum of the vector forces in the greater trochanter would be nearly perpendicular to the apophyseal plate and works as an active stabilizer.

During the practice of karate, the mechanism of external rotation is frequently called upon. The main muscles used are the gluteus medius, gluteus minimus, semitendinosus, and semimembranosus. During external rotation of the hip, the obturator internus, gemellus superior, and gemellus infe-

rior muscles contract and their vector forces are parallel to the apophysis plate, with no distraction forces applied to the physes (Figure 1D). This mechanism explains why there is no physal enlargement in external rotator overuse. In conclusion, the greater trochanter is a rare site of apophysitis of which that the radiologist must be aware.

#### REFERENCES

1. Arnaiz J, Piedra T, de Lucas EM, et al. Imaging findings of lower limb apophysitis. *AJR Am J Roentgenol.* 2011;196:W316–25.
2. Poland J. Traumatic separation of the epiphyses. London: Smith, Elder, & Co.; 1898.
3. Young SW, Safran MR. Greater trochanter apophysitis in the adolescent athlete. *Clin J Sport Med.* 2015;25:e57–8.
4. Macdonald D, Mahmood F, Allcock P. Greater trochanter apophyseal avulsion in the adolescent managed conservatively: a case report of a sporting injury presenting with knee pain. *Injury Extra.* 2012;43:1–3.
5. Yanaguizawa M, Taberner GS, Aihara AY, et al. Imaging of growth plate injuries. *Radiol Bras.* 2008;41:199–204.
6. Heimkes B, Posel P, Plitz W, et al. Investigations on mechanism of Salter-I-fractures of the greater trochanter. *Eur J Pediatr Surg.* 1993;3:41–5.
7. Freitas A, Macedo Neto SL. Apophyseal fracture or avulsion of the greater trochanter. *Acta Ortop Bras.* 2016;24:164–6.
8. Kimura Y, Tsuda E, Yamamoto Y, et al. Apophysitis of the greater trochanter in adolescent athletes: a report of 4 cases. *J Orthop Sci.* 2016. doi: 10.1016/j.jos.2016.11.010. [Epub ahead of print].

**Rafael Seiji Kubo<sup>1</sup>, Eduardo Noda Kihara Filho<sup>1</sup>, Eduardo Kaiser U. N. Fonseca<sup>1</sup>, Adham do Amaral e Castro<sup>2</sup>, Durval do Carmo Barros Santos<sup>1</sup>**

1. Imaging Department, Hospital Israelita Albert Einstein, São Paulo, SP, Brazil. Correspondence: Dr. Adham do Amaral e Castro. Hospital Israelita Albert Einstein – Departamento de Imagem. Avenida Albert Einstein, 627, Jardim Leonor. São Paulo, SP, Brazil, 05652-900. E-mail: adham.castro@gmail.com.

<http://dx.doi.org/10.1590/0100-3984.2017.0065>